

# WELCOME TO BETHEL!

We at Bethel extend a warm welcome to those worshipping with us today! Please join us for coffee, tea, and conversation in the Tea & Coffee Lounge after the service.

We welcome children to stay for the entire service and worship alongside us. If you are concerned that your child may get restless, we offer nursery childcare as well as rooms for nursing mothers during morning and evening worship. Our nursery is located just off of the Tea & Coffee Lounge.

## WELCOME, VISITORS!

We're so glad you joined us for worship today. For a free gift, come to the Welcome Center. We would love to get to know you better!

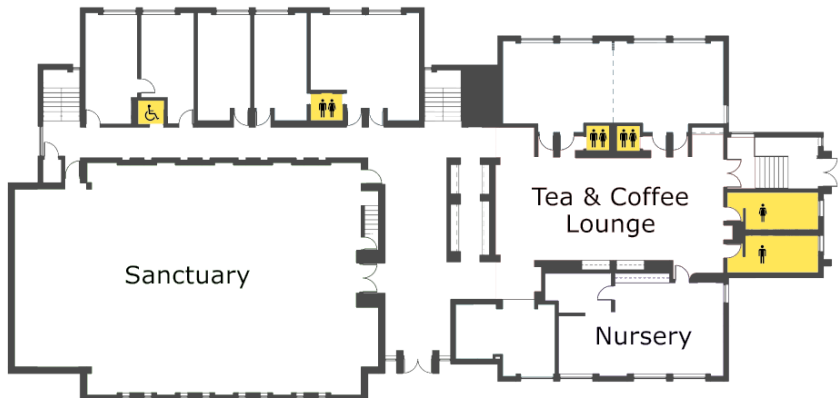


Please scan the QR code and let us know how we can best serve you.

If you need a Bible of your own, please visit our Welcome Center outside the sanctuary; hospitality volunteers will be able to provide you with one.

For **Wheaton students**, we offer rides to and from the college every Sunday on the Bethel bus. Pick up is at 9:10 am from Saga-O and return rides leave at 11:15 am and 12:05 pm.

**Personal PA receivers** are available during the service for those that are hard of hearing; please ask an usher if you could benefit from one.



# THE ORDER OF WORSHIP

Nov 20, 2022

9:30 am

The Prelude

Welcome & Announcements

## THE SERVICE OF APPROACH TO GOD

\*The Call to Worship Psalm 146:1-2

\*The Opening Hymn 57  
*Hallelujah, Praise Jehovah, O My Soul*

\*The Invocation

\*The Confession of Faith Apostles' Creed  
I believe in God the Father Almighty, Maker of heaven and earth. And in Jesus Christ, his only Son, our Lord, who was conceived by the Holy Spirit, and born of the virgin Mary. He suffered under Pontius Pilate, was crucified, died, and was buried; he descended into hell. The third day he rose again from the dead. He ascended into heaven and is seated at the right hand of God the Father Almighty. From there he will come to judge the living and the dead. I believe in the Holy Spirit, the holy catholic church, the communion of saints, the forgiveness of sins, the resurrection of the body, and the life everlasting. Amen.

The Confession of Assurance

The Law of God Deuteronomy 5:1-22

The Prayer of Confession

The Declaration of Pardon Galatians 2:16

\*The Hymn of Thanksgiving 535

*O the Deep, Deep Love of Jesus!*

## THE SERVICE OF THE WORD OF GOD

The Scripture

The Old Testament Lesson

Isaiah 55:1-13

*pg. 782*

The New Testament Lesson

Revelation 3:14-22

*pg. 1313*

Leader: *This is the Word of the Lord.*

People: *Thanks be to God.*

The Sermon

“Naked Come to Thee for Dress”

(Revelation 3:14-22)

*Dr. Daniel Schrock*

## THE SERVICE OF RESPONSE TO GOD

\*The Hymn of Response

501

*Just As I Am, without One Plea*

The Intercessory Prayer

Our Father in heaven, hallowed be your name. Your kingdom come, your will be done, on earth as it is in heaven. Give us this day our daily bread, and forgive us our debts, as we also have forgiven our debtors. And lead us not into temptation, but deliver us from evil. For yours is the kingdom and the power and the glory, forever. Amen.

The Offering and Offertory

*Please pass the Friendship Pad, located at the center aisle.*

\*The Doxology and Prayer of Dedication

733

\*The Closing Hymn

499

*Rock of Ages, Cleft for Me*

\*The Benediction

\*The Postlude

# BETHEL TODAY

SUNDAY, NOV 20, 2022

## **9:30 am Morning Worship**

Daniel Schrock is preaching. Lilian Chou is the pianist. Offertory music is provided by the choir.

## **11:15 am Sunday School**

### **Songs for the Road: An Introduction to the Psalms of Ascent**

*This class meets in the sanctuary*

The Psalms of Ascent (Psalms 120–134) were intended to help God’s people think and feel rightly about their place in the midst of a fallen and failing world. As a people once scattered among the nations returned home, these are the prayers, praises, and prophecies upon their lips, calling for God’s people in all places and at all times to “seek the city that is to come” (Heb. 13:14). This class provides an overview of the book of Psalms and explores how and what these fifteen "songs for the road" mean for us today. Led by Ben Thocher.

### **Strange New World: How Thinkers and Activists Redefined Identity and Sparked the Sexual Revolution**

*This class meets in the downstairs multipurpose room*

How did the world arrive at its current, disorienting state of identity politics, and how should the church respond? Historian Carl R. Trueman shows how influences ranging from traditional institutions to technology and pornography moved modern culture toward an era of “expressive individualism.” Investigating philosophies from the Romantics, Nietzsche, Marx, Wilde, Freud, and the New Left, he outlines the history of Western thought to the distinctly sexual direction of present-day identity politics and explains the modern implications of these ideas on religion, free speech, and personal identity. Led by Zach Meadows.

### **New Members Class**

*This class meets in the downstairs jr. high room.*

This six-week new members class introduces the history and theology of Bethel and the OPC. We will consider the centrality of God, the gospel, worship, sacraments, community life, and Presbyterianism. Please join us if you are interested in joining the church or would simply like to sit in and learn more about Bethel.

## **5:30 pm Evening Worship**

Elliott Pinegar’s sermon is from Genesis 42:1-38, “Spies or Servants?”

## THIS WEEK AT BETHEL

Nov 20	12:00 pm	College Fellowship Meal
Nov 20	6:30 pm	Bethel Youth Group
Nov 24	10:00 am	Thanksgiving Service

## COMING IN BETHEL

### Preaching Schedule for Nov 27:

Morning worship: Dr. Charles Telfer

Evening Worship: Rev. Lendall Smith

Nov 28	7:00 pm	Diaconate Meeting
Nov 29	10:30 am	COD Book Table
Nov 29	7:00 pm	Women's Bible Study (Zoom)
Nov 30	9:30 am	Women's Bible Study (In-Person)
Dec 1	7:00 am	Men's Bible Study
Dec 3	7:15 am	Men's Breakfast
Dec 3	5:00 pm	Christmas Party

### Music Schedule for Nov 27:

Morning Accompanist: Kathy De Jong

Offertory Music: Katrina and Leah Meadows

Evening Accompanist: Katrina Meadows

### Mark your calendars for upcoming events:

Dec 4	Hymn Sing
Dec 18	Children's Christmas Program

For a look at more of what's happening in the life of Bethel, please visit our website: [bethelopc.org](http://bethelopc.org) and click the calendar button at the top, or go to [bethelopc.org/calendar](http://bethelopc.org/calendar).

## BETHEL PRESS

**College Luncheon.** College students, join us following Sunday school for a luncheon in the downstairs fellowship hall!

**Deacon Christmas Store Drive.** The deacons have a display in the narthex encouraging members of Bethel to participate in the Christmas Store Gift Drive. Every Christmas, Wheaton Bible Church's outreach ministry, Puente del Pueblo, along with many other churches in the area, support under-resourced families in our community. The Christmas Store is an opportunity for these families to purchase affordable gifts for their children. The store will sell them at a reduced cost (75% or more off of the retail price), and volunteers will then wrap the gifts. In addition, the Christmas Store provides an opportunity to reach out to these families by praying with them and encouraging them to connect with a local church family. If you would like to participate, please take a tag and purchase a gift appropriate for the listed age and gender, attach the receipt to the gift, and bring it unwrapped to the church. There is also an Amazon or Target link ([www.christmastore.org](http://www.christmastore.org)) if you would like to have your gift shipped directly through these retailers. The gift drive will go through December 4.

**Treasurer's Note.** Per the Bethel Treasurer's Report through September 30, 2022, contributions to the church operating fund for the year-to-date are \$441,092.54 vs the year-to-date budget of \$461,250, reflecting a budget shortfall of (\$20,157.46).

Church expenses through September year-to-date are \$451,133.37 vs the year-to-date expense budget of \$473,491.23, reflecting (\$22,357.86) expenses lower than budgeted.

As we approach the end of the year, if you would like to receive an accounting of your family's giving for the year-to-date for your year-end planning purposes, feel free to contact the Treasurer, Mike LoRusso, at [michael.lorusso@bethelopc.org](mailto:michael.lorusso@bethelopc.org).

**OPC Thank Offering.** Each November we have the opportunity to support in a very tangible way the three main program ministries of the OPC: Christian Education, Home Missions and Foreign Missions. You can learn more about the Thank Offering and how it is used at [OPC.org](http://OPC.org) or in the current issue of New Horizons magazine. Bethel will receive your gifts for the Thank Offering on Nov. 13, 20 and 27, as well as at our Thanksgiving Day service. Please designate "Thank Offering" on your check, or select 'Thank Offering' from the drop down when giving online.

*\*\* If you have an announcement for the bulletin, please send it to Katherine Czerwinski, [Katherine.czerwinski@bethelopc.org](mailto:Katherine.czerwinski@bethelopc.org) by Tuesday for it to be included the following Sunday.*

**Military Care Packages.** The Care Committee will be putting together care packages for our military members. These packages will be sent to Aaron Meyer, Jim Mittlestaedt and Ben Yanke. If you would be interested in participating in this ministry, there will be a collection box in the narthex for Christmas cards and letters. Additionally, we will be collecting monetary donations for the Care Committee to purchase items to send in the care packages. If you would like to make a monetary donation you may do so by writing a check to Bethel with "Care Package Fund" listed in the memo line and deposit it into the offering plate. You may also give online by selecting the "Care Package Fund" donation option. The Care Committee will be collecting cards and monetary donations until December 4, 2022. Thank you for your willingness to consider caring for our military members in this way!

**Christmas Party.** All are invited to attend the Bethel Christmas Party on December 3 in the downstairs fellowship hall at 5:00 pm. The festivities will consist of dinner provided by the Fellowship Committee, a cookie exchange, activities for kids, and the ever-popular White Elephant gift exchange game.

To participate in the cookie exchange, bring 2 dozen of your favorite Christmas treats and go home with a variety of 2 dozen from others! The White Elephant gift exchange is a game where participants bring a wrapped gift and the group members take turns opening and swapping gifts until everyone has one. The gifts can be new or second-hand; practical, unusual, funny, or nice. No need to go out and spend money on a gift; feel free to bring something you have lying around the house.

The Fellowship Committee will provide dinner of Italian beef sandwiches, pasta, and salad. Reservations for dinner are requested. Please RSVP by emailing Michele Martzke (mmartzke@gmail.com), signing up in the tea & coffee lounge, or by visiting [bit.ly/bethelparty](https://bit.ly/bethelparty) to let us know you're coming. If you are willing, please bring a dessert to share.

**Hymn Sing.** The Music Committee is hosting a hymn sing on Sunday afternoon, Dec. 4, at 4:30 at the church. Note some of your favorites from the Trinity Psalter or the Trinity Hymnal and come for a time of mutual encouragement as we sing praises to our great God! Any questions can be directed to Katrina Meadows, Jason Martzke, or Kathy De Jong.

# NOTES

**Central Truth:** Christ calls us out of our delusions of self-sufficiency into his true sufficiency.

1. Delusions of Affluence

2. Discipline and Love

3. Dinner with the King